

THE LATEST DEVELOPMENTS AND 2022 KICKOFF

Updates and successes of 2021, and latest additions for 2022.

INTRODUCING THE LAUNCH OF OUR WEB SHOP

INTRODUCING THE LAUNCH OF OUR WEB SHOP!

20
JAN

Visit our Web Shop at:
[https://scs-
hp.com/shop/en/](https://scs-hp.com/shop/en/)

We are pleased to officially introduce our newest functionality: the SCS-HP Web Shop portal.

This platform has been meticulously crafted to reflect our entire product portfolio.

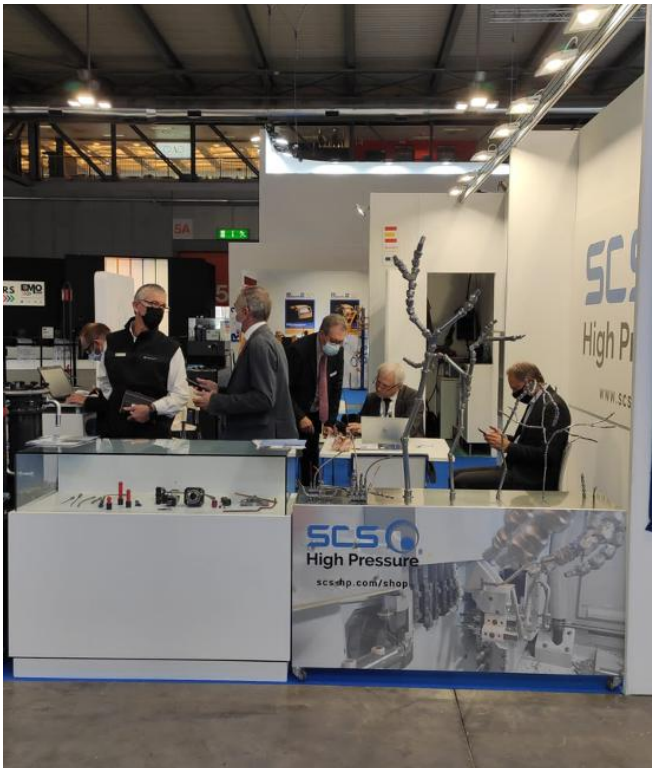
The core purpose behind the construction of this platform is to bridge the gap between our distributors and their customers: we take a distributor-centric approach to our sales and aim for this platform to increase your business.

Your sales commissions will be safe and potentially increased: if a transaction goes through in a distributor territory, the distributor in that territory will receive the sales commission.

The Web Shop also enables issuing an RFQ through the platform directly to the distributor.

TRADE SHOWS AND EXPOS ARE BACK ON THE AGENDA

The world is recovering from COVID and welcomes back Face to Face events. Exhibitions such as SIAMS, SIMODEC and many others in Europe will be taking place this year, alongside IMTS in Chicago, USA.



In 2021, we were present at the EMO 2021 show in Milan with a large number of visitors - greatly exceeding our expectations.

We were also present at the MEC Nagoya expo in Japan for the first time. With thanks to our local distributor, our products generated interest amongst the visitors to our booth.

TRADE SHOWS AND EXPOS ARE BACK ON THE AGENDA

The world is recovering from COVID and welcomes back Face to Face events. Exhibitions such as SIAMS, SIMODEC and many others in Europe will be taking place this year, alongside IMTS in Chicago, USA.



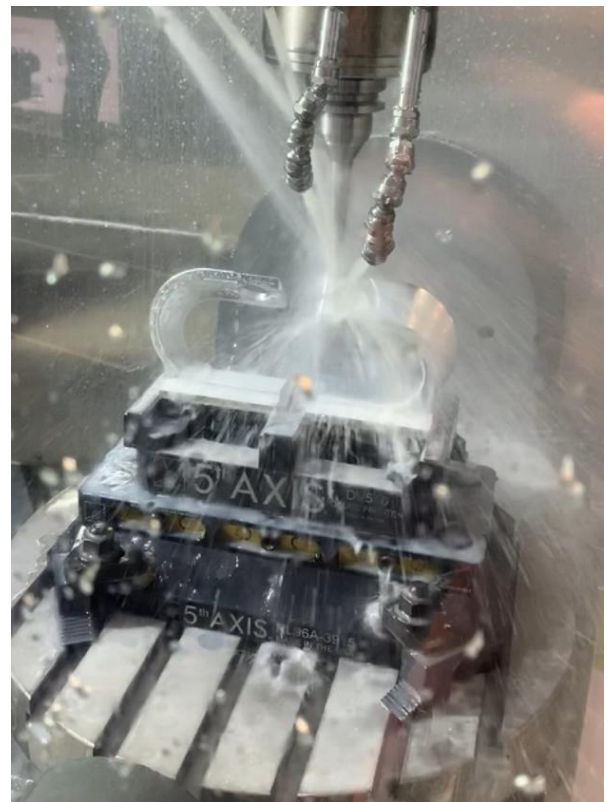
In 2021, we were present at the EMO 2021 show in Milan with a large number of visitors - greatly exceeding our expectations.

We were also present at the MEC Nagoya expo in Japan for the first time. With thanks to our local distributor, our products generated interest amongst the visitors to our booth.

PRODUCT MILESTONES AND SUCCESS

We launched our products in Q4 2018. Within 3 years we have built the largest product portfolio in the industry, including 500 references, with proven quality and virtually zero complaints from our customers worldwide.

Our Spanish regional distributor recorded 64 customers using our products at the end of 2020. By the end of Q3 2021, this number had grown to 146 customers. Not a single article was returned due to quality problems or performance related issues.



HECTO ARTICULATED STEEL TUBES IN A CUTTING DEMONSTRATION WITH IMPROVED COOLANT DELIVERY IN A 5-AXIS MACHINING CENTER.

PRODUCT UPDATES: LATEST ADDITIONS

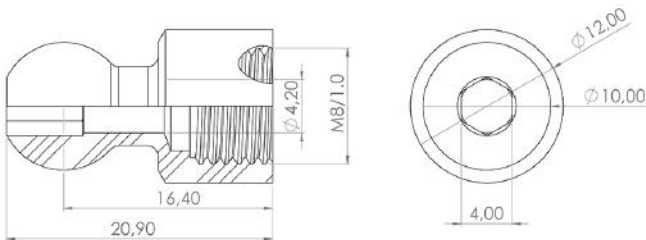
MICRO AND NANO

1. New adaptors and several specific fittings for the US market.

- MI-CA-01-22 Adaptor NPT 1/8"(F) to M8x1(M)
- MI-CA-01-23 Adaptor M8x1(F) to M10x1.5(M)
- MI-CA-01-24 Adaptor JIC 1/4" UNF 7/16-20(M) to M8x1(M)
- MI-CA-01-25 Adaptor JIC 1/4" UNF 7/16-20(M) to BSPP 1/8"(M)

2. New ball adaptors for machine turrets that allow to adapt flexible tubes to shanks of drills or boring tools with coolant through.

- MI-CA-05-00 Adaptor ball OD:10 mm to M8x1(F).
- MI-CA-05-01 Adaptor ball OD:12 mm to M8x1(F).
- MI-CA-05-02 Adaptor ball OD:14 mm to M8x1(F).
- MI-CA-05-03 Adaptor ball OD:15 mm to M8x1(F).



DECA AND HECTO

Copper tubes: on one end initial connection to machine tool coolant ports and on the other end adaptor to the DECA or HECTO family of nozzles.

Ensure perfect coolant delivery to the tip of the tool. A cost-conscious solution for fixed lathes or Swiss-type lathes. Tube diameters 6 mm, 8 mm and 10 mm.

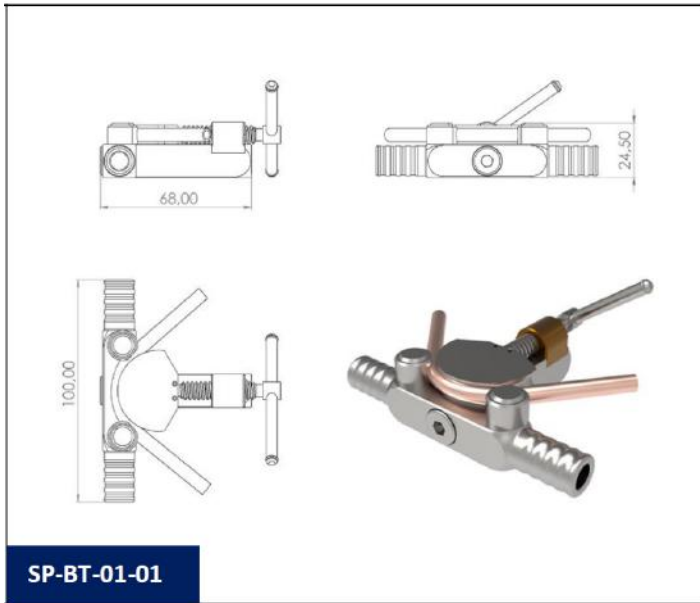
ITEM NO.	PART NUMBER	DESCRIPTION	QTY.
1	HE-DA-04-00	NUT HECTO	2
2	HE-DA-04-02	COMPRESSION RING HECTO	2
3	HE-IC-03-00	BSPP 1/8"(M) to NUT HECTO	1
4	Copper tube	102/152/203/305/406 mm	1
5	HE-DA-04-01	ADAPT. HECTO NUT	1

PART NUMBER	DESCRIPTION
HE-DT-01-00	L = 102 mm
HE-DT-01-01	L = 152 mm
HE-DT-01-02	L = 203 mm
HE-DT-01-03	L = 305 mm
HE-DT-01-04	L = 406 mm

HE-DT-01-00..04

PRODUCT UPDATES: LATEST ADDITIONS

SAFETY AND PRODUCTIVITY



New precision manual bending tool for 6mm copper or steel tube that adds to the existing 8mm bending tool.

New blocking system for safe tool change for TORNOS DECO and some additional STAR driven tool holder.



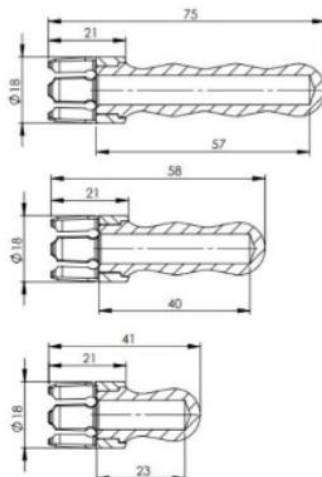
SP-BS-41-00 Blocking system mounted on a TORNOS rotary tool holder ref. 306164.



SP-BS-41-00 Blocking system mounted on a TORNOS rotary tool holder ref. 306164 with SP-BS-43-00 Blocking key in position for safe tool change.

PRODUCT UPDATES: LATEST ADDITIONS

SAFETY AND PRODUCTIVITY



REFERENCE	For Collet Nut	L (mm)
SP-TP-01-00	ER-11	23
SP-TP-01-01	ER-11	40
SP-TP-01-02	ER-11	57

Tool protection for collet tool holders with ER Mini nut: Covers the tools mounted in the tool holder eliminating the risk of injuries during tool changes and allows tools to be stored and kept mounted in the tool holder without the possibility of damage or breakage. It can be installed and removed in just seconds without the need of tools.

Available in 3 lengths for ER-11, ER-16 and ER-20.

Developed through a direct inquiry from one of our clients: a top 5 world-wide fabricator of dental implants.

SP-TP-01-00/01/02

PRODUCT UPDATES: LATEST ADDITIONS

SAFETY AND PRODUCTIVITY



Spindle/subspindle locking system for safe collet change or adjustment in Swiss type lathes.

The traditional spindle locking tool is not safe, and it makes it is easy for the tool to accidentally slip out of position, thus getting damaged or even injuring the machine tool operator.

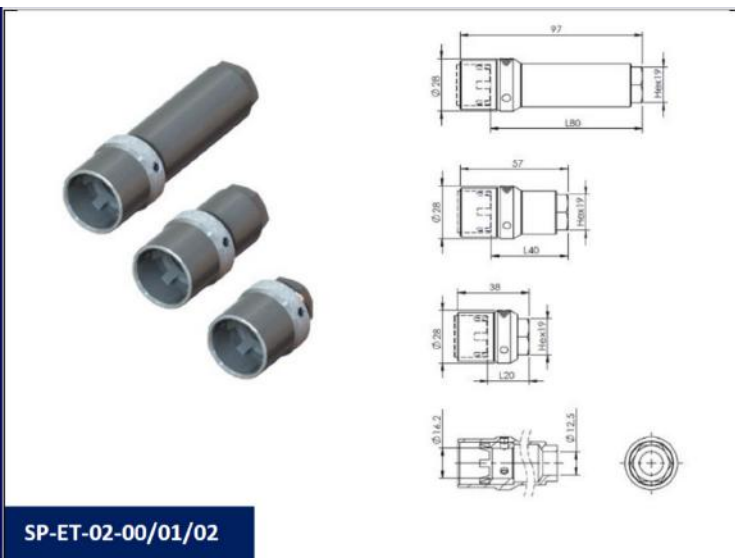
The SCS Safe Spindle Locking system makes the collet change or adjustment much easier and minimizes the risk of injury.

PRODUCT UPDATES: LATEST ADDITIONS

SAFETY AND PRODUCTIVITY

Extension tube from ER Mini type nut to Hexagon for safe tool change:

- Extension tube fits into the ER M nut slots and covers the cutting tool during the tool change process preventing possible injury.
- The hexagon of the extension tube allows the operator to place the wrench and apply the necessary force to fasten/unfasten the ER M nut safely, minimizing the possibility of the wrench coming loose and eliminating the rounding of the edges of the nut. It even allows the use of torque wrenches.
- The combination of the extension tube ER M nut with the SCS safe locking systems (e.g., SP-BS-01-00) and/or the SCS tool protector (e.g. SP-TP-01-00) greatly increases operator safety and facilitates tool changes.
- There are different extension tube lengths to completely cover the tools mounted in the ER tool holder, however, if necessary, it can be used with longer tools.

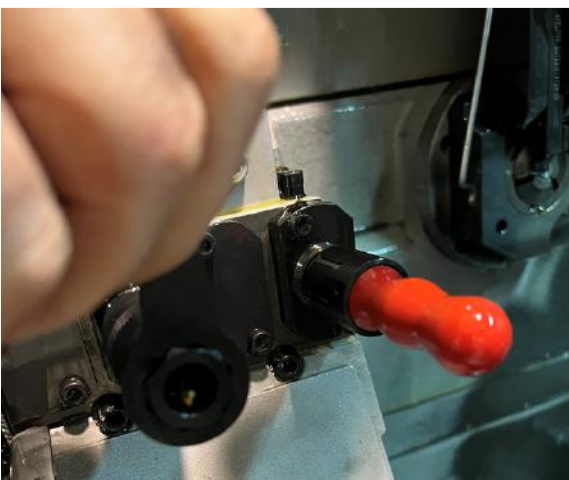


Extension tube from ER Mini type nut to Hexagon for safe tool change demonstration:



Standard wrench that comes with the lathe. Extremely easy for the machine tool operator to get hurt with the tool itself or the adjacent tools if not being very careful.

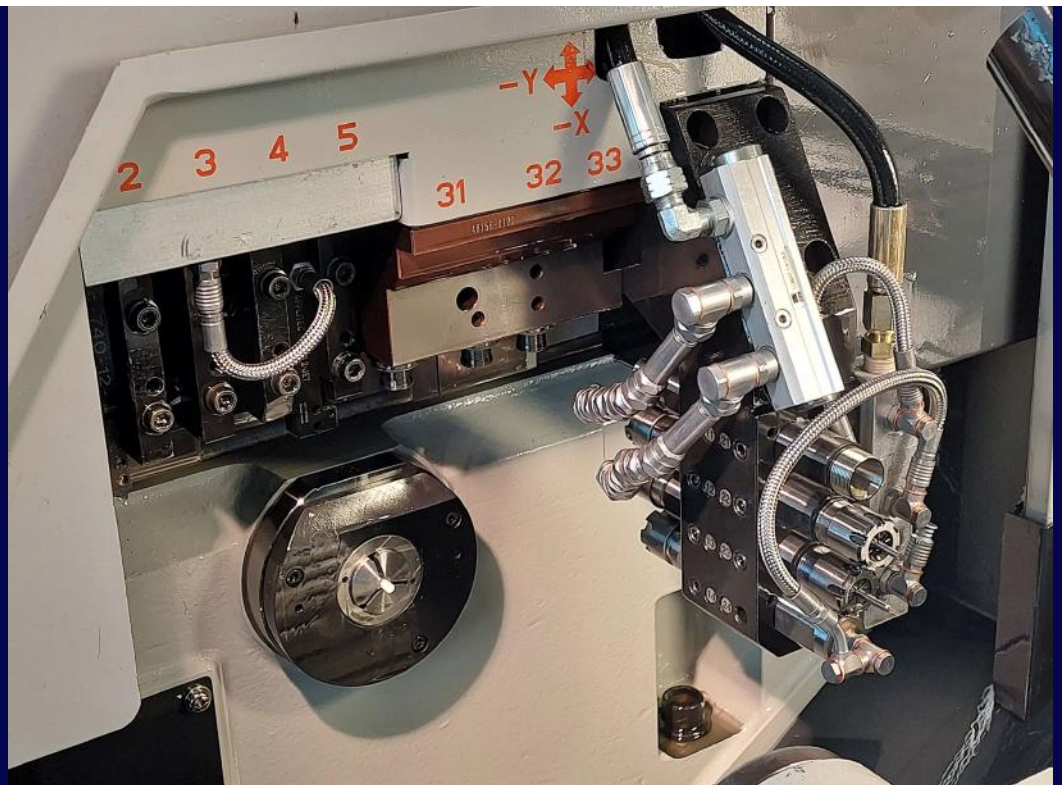
The SCS extension tube covering the tool and its ring end wrench provides a much higher degree of safety.



Ideally, with the combination of SCS tool protector system, risk of injury during tool change is almost non-existing.

And finally, a warm welcome to **MULTIMATIC**, from Italy, and **PREVOTEX**, from Hungary, to our distribution networks.

We are delighted to welcome our newest distributors and hope to have a fruitful business activity with them in 2022 and beyond.



We plan to continue bringing new products to the marketplace that can add value and make machining more productive, efficient, and safe.

It is our hope and belief that 2022 will bring a significant increase in sales and customer adoption of our products.

We'd like to hear about your feedback and experiences and remain absolutely open to any suggestions that you may have, or any products that you feel could bring value to customers and have a good acceptance in the market.

Thank you!



High Pressure

www.scs-hp.com